

Better Homes and Gardens®

APRIL 2014
BHG.COM \$3.99

Easter feast
p.128

**Color
made easy**

**SMART
STYLE**
10 GREAT
PORCH
IDEAS *p.58*

**ADD
COLOR TO
NEUTRAL
ROOMS** *p.50*

**BRIGHT
BORDERS
TO PLANT
NOW** *p.90*



In home and in fashion, color is taking a turn, and the mood is energetic, fresh, and sophisticated. Blues are key, warmed by nature's green, yellow, and lavender. *Better Homes and Gardens*® translates this inspiration into a palette for 2014 that's pretty, comfortable, and truly livable.

life in bloom



BY SALLY FINNER WELLS | PHOTO: URSO SCHNEIDERMAN
PRODUCED BY BRIGIT BOSS AND JESSICA THOMAS | MARKET EDITOR RACE WULLINE

BHG color palette of the year

A midrange delphinium blue is like a pair of comfy jeans—it's **timeless** and looks great with anything.

BLUE JEAN 2065-20
bhg.com

Cobalt is the biggest news in fashion, wearable for anyone and any room. We borrowed ours from the **midnight sky**.

INDIGO CLOTH 4009-7
bhg.com

Here's a better beige, naturally **warm** like pebbles in sand.

NAVAL WHITE 018-1
bhg.com

This pretty poppy explores the trend of **adventurous brights**.

HAKU 4-7
proffandlombert.com

Hello, optimism. Pulled from the sun, our **energetic yellow** brings a happy mood.

SUNDAY AFTERNOON 114-12
bhg.com

Orchid, plum, lavender—there's a bumper crop of purples out there. Gray undertones in our lilac pick make it **easy to live with**.

ORCHID LILAC 314556
shermawallace.com

This **leaf-inspired** hue is just like the greens in nature—a colorful neutral.

ELM VALLEY 820-8
coofordvart.com

REPEAT THAT

Use an accent color in multiple places (lamp and pillows) so it doesn't feel random.

Yellow Tottle Lamp, \$149; Target.com

BRIGHT ON

Dress up a bargain table with spray paint: gold on the frame; pink on the pop-out shelf.

George Meeting Tables, \$200; Target.com

Add color to a neutral room by **MIXING** new accessories with things you already own.

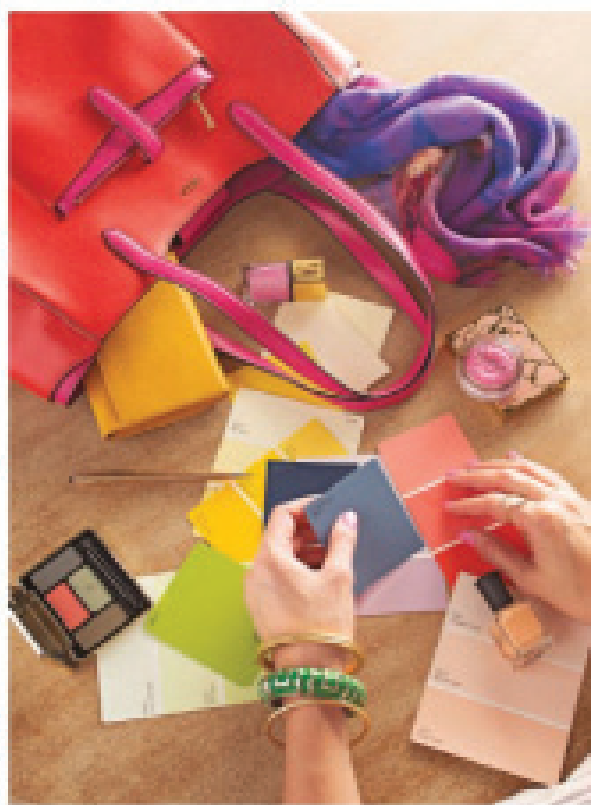
START HERE

Whether creating a palette or picking hues for accessories, take a cue from a multicolor fabric you love. [Info in Matix: californiamatix.com](http://info.in.Matix.com/collections.html)



picking the palette

How'd we do it? We went through dozens of trend forecasts, a frequent-flier log of trade show visits (including the Color Marketing Group's international summit), and hundreds of paint chips, for starters. Then we adjusted tones and intensities to offer hues that are livable and lasting. Color pro Kate Smith of Sensational Color took a peek and had this to say: "These hues can be combined into an almost unlimited number of personalized schemes." So dive in—have fun creating your own colorful home.



a living room with layers of color

Keep calm. Adding color doesn't have to mean painting walls a head-ringing hue. Neutrals are an easy-to-live-with backdrop for color elsewhere. And no worries about a cold, stark feel—today's neutrals are shifting back to classic warm tones.

Dip a toe in. Because it's down below eye level—not in your face—a rug is the perfect place for an infusion of color. Try layering a colorful rug over your existing neutral floor covering. Ikat Flat-Weave Wool Rug, \$348; garnethill.com

Invite mingling. Colors—and rooms—get more interesting when you vary patterns and textures: botanicals and geometrics, madras and velvet. Studio Tullia Velvet Pillow, \$58, and YunerShop Silk Velvet Ikat Pillow, \$570; etsy.com

Set it off. Try white trim rather than the same neutral as the walls. Contrast makes a room's traditional elements feel fresh.

Get some glimmer. Metals bring a bit of on-trend sparkle, and gold is big in both home and fashion. Mix metals and finishes for a modern look: brass on the curtain rod and vase, gold on the coffee table and bar cart. Solid Brass Pot Planter Vase, \$24.99; jarroaligarden.com

Expand your neutral zone. Think neutral always means beige or gray? Think navy—the blue on our sofa grounds bright yellow and coral. But its dibled-back intensity (and lifting it off the floor with an exposed-leg design) means there's no danger of it reading as a "black hole" in an otherwise light, pretty room. Griffin Sofa in Canvas Blue Sumbrella, \$1,995; ballanddesigns.com

Be natural. Count on plants for an easy hit of color and life. Other natural elements also inject warmth, like bamboo blinds that echo sisal carpet. Bamboo Shades in Tortoise; blinds.com



PICK A SIDE
 The secret to these fab pillows? DIY-dyed fabric. See our easy how-to at BHG.com/Pillows.



quick color ideas

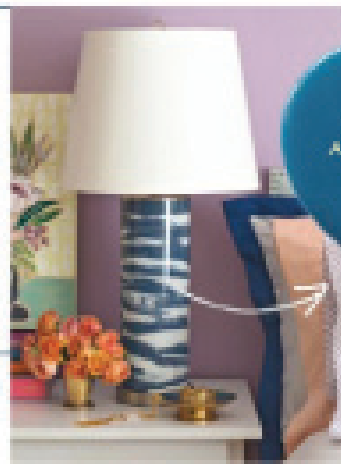
Buy it, make it—get instant color without big commitment

1. Threshold Tray Top Table, \$69.99; target.com. 2. Boho Lidded Candles, \$20.10; threecandles.com. 3. Portuguese Handmade Spongeware Sabid Plates, \$22 each; coveasforrestore.com. 4. From top: Threshold Performance Sheet Set, queen, \$49.99; target.com. Chantrey Linen Ink Duvet Cover, full/queen, \$395; phicoreshill.com. Doris Coral Coverlet, full/queen, \$469.99; cransandbarrel.com. Clementine Coral Sheet, \$30–\$40 for pair; cransandbarrel.com. 5. Rosanna Bowls, \$5+ for set; rosannafab.com.



buy it or DIY it!

A \$300 lamp by designer Benny Williams, left, inspired our DIY look-alike, right. See how we painted a \$29.99 Walmart find to make it look like a designer piece. BHG.com/Lamp



NIGHT SKY
 Americana satin
michels.com

DIY BLUE
 Americana satin
michels.com



110 Laverne SW652
Dorothy-Walton

101 Lila SW652
Dorothy-Walton

IN BALANCE

Watery blue works with navy to keep pastels from feeling precious.

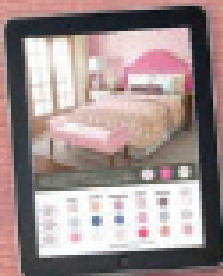
Over: Handloomed, full queen. katejoneslin.com

refresh a bedroom

Try a surprise combo. Pastels and paint pros are pumped about purple, so take it beyond a child's room. Paired with classic navy, lavender is all grown up.

Perfect your accent. Use a deep shade from your paint chip for an accent wall, then dial back a couple of shades for the other walls to keep a light, livable look.

Top it off. Master the look of mixed bedding. The key is repetition, with a twist. Lavender from the wall shows up in a pillowcase pattern. Coral softens from punchy on the coverlet to muted and peachy on pillows. Neutral navy on drams and a throw pulls everything together. BHG Coral/White Reversible Quilt Set, \$499.95; westward.com



Play with paint and fabric from this palette. Try the Color Studio tool in our enhanced tablet editions. BHG.com/DigitalExtras

"This palette speaks to how we're keeping our claim on color, but in a livable way."

JOHN WEST, COLOR MATCHING GROUP

make a statement

Turn tradition on its head. Put color on the trim, not the walls. Architectural details like wainscoting and window moldings will finally get the attention they deserve.

Play with pattern. Spring fashion is all about blue, especially cobalt. Try deep blue on this season's hottest trend—the statement skirt. Pair it with a neutral top. Like this pastel pink beauty. Top and skirt, \$99 each; blissandmore.com

IN DETAIL
Simple fabric bands customize an inexpensive roller shade.

Sunday Afternoon T14-16
\$69

Here's the best news about the blue trend in fashion: Absolutely anyone can wear it and look great.

update a classic

Mix styles. Blue-and-white dishes look so right—now when they're part of a setting that mixes modern pieces with handmade. Faceted plate; Castle Peak Cream Accent Plate, \$171, knox.com; Bowl Set In Butterfat, \$52, saltseasradfco.com.

Add unexpected accents. Gold flatware and coral napkins bring on the fresh. Mix in more blues, too—real promises to be the next hot hue. Five-piece Domino Flatware Set, \$65, shoprecon.com.

Warm up the walls. A rich blue background brings out the luster in dishes. A coloring technique makes the wall color less intense, especially when paired with crisp white moldings. ■

Seaside Blue 576523
Sherwin-Williams

Win
\$25,000!

Enter our Sweepstakes for a chance to win \$25,000 to redecorate your home with color. Go to IHG.com/winColor. Details on page 164.